

centralkansas.k-state.edu/4-h

# Central Kansas District 4-H

**February, 2024**

## 4-H Council News

### March Meeting

The March 4-H Council Meeting will be held on Monday, March 25 at 7:00 p.m., in Salina. We will meet in the College Center Conference Room. Council members should watch their email for the agenda packet closer to the meeting date.

## 4-H Newsletter Deadlines for 2024

If you have something you would like in the 4-H Newsletter, be sure to email it to [jlschmeid@ksu.edu](mailto:jlschmeid@ksu.edu).

Deadlines are:

- March - February 10
- April - March 10
- May - April 10



**K-STATE**  
Research and Extension

K-State Research and Extension is an equal opportunity provider and employer.

[Kansas4-H.org](http://Kansas4-H.org)

## Gavel Games & Model Meetings Results

Congratulations to all the participants! The judges had positive comments and enjoyed your presentations! Remember, teams presenting on Friday were not eligible for Regional 4-H Club Day. RQ = Regional Qualifier

### Gavel Games: Junior

Boldly Go Junior A - Purple (RQ)  
 Boldly Go Junior B - Purple (RQ)  
 Cardinal Junior A - Purple  
 Cardinal Junior B - Blue  
 Friendly Valley Junior A - Purple  
 Pleasant Valley Junior A - Blue

Pleasant Valley Junior B - Blue  
 Smoky View/Willing Workers Junior A - (Friday) - Blue  
 Smoky View/Willing Workers Junior B - (Friday) - Red  
 Sunny Valley Junior A - Blue

### Gavel Games Senior

Boldly Go Senior A - Purple (RQ)      Cardinal Senior A - Red

### Gavel Games: Extemporaneous

Extemp A - Participation - Timothy Ade, Zoe Ade, Acacia Pracht, Eian Pracht

### Model Meetings

Willing Workers - Purple (RQ)



## 2024 Central Kansas District 4-H Ambassadors

Congratulations to the new Central Kansas District 4-H Ambassadors:

Acacia Pracht, Smoky View      Eian Pracht, Smoky View

Continuing Ambassadors are:

Ariana Baltazor, Willing Workers      Kaitlyn Watkins, Willing Workers

## Citizenship In Action Prep Meeting

A Citizenship In Action (CIA) Prep Meeting will be held via Zoom for those who registered to attend CIA February 18-19 in Topeka. Watch your email for the link and plan to attend!

## 4-H Council Scholarships

4-H Council scholarships are available for numerous 4-H sponsored events. If you are interested in receiving a scholarship, it is important that you not only complete the 4-H Council Scholarship Application, but that it is submitted to either Extension Office at the same time you pay the registration fee. The application can be found at <http://www.centralkansas.ksu.edu/4-h> under 4-H Member Forms & Documents. Applications cannot be submitted online. Scholarships must be submitted before the registration deadline. **Any applications received after the registration deadline will not be considered for a scholarship.**

# 4-H Club Day Information – February 17, 2024

Results from the 2024 4-H Club Day (including run-off information) will be posted on the Central Kansas District website (<https://www.centrankansas.k-state.edu/4-h/4-hclubday/>) on February 17, 2024, as they become available.



In light of several considerations, an option to submit pre-recorded presentations will be available for 4-H Club Day 2024. This option is intended to encourage all 4-H members to participate in preparing and giving a presentation, regardless of health situations or scheduling conflicts.

- If a 4-H member has signed up for an in-person presentation and a health situation necessitates switching to a digital submission after the January 22 registration deadline, families will need to communicate with Kate to move to the digital option by calling 785-309-5850 or emailing her at [klittich@ksu.edu](mailto:klittich@ksu.edu).
- Remember, the option to record and submit digitally is only available for Sharing, Junior Demonstrations/Illustrated Talks, Junior Project Talks, Senior Demonstrations/Illustrated Talks, and Public Speaking.
- Guidelines for recording presentations may be found on page 12 of the December/January newsletter along with the guidelines for in-person 4-H Club Day.
- All digital submissions will be due by 12:00 p.m. (noon) on February 16, 2024.

For more detailed information about activities at 4-H Club Day, such as Dog Skillathon, FCS Judging Contest, Photography Judging School, concession stand, incentive prizes, and Inspire Kids to Do service area, please refer to the 4-H Club Day program booklet.

## Help with 4-H Club Day Presentations

One of the greatest benefits of 4-H is learning to do public presentations! We encourage every 4-H member to participate in 4-H Club Day coming up in February! Resources are on the 4-H website at <http://www.centrankansas.ksu.edu/4-h>, under 4-H Club Day on the left-hand side of the page and include videos to help you with the planning and presenting demonstrations/illustrated talks, project talks, and public speaking. At this time, we are adding additional videos so check back as new examples are being added as they become available. This information is intended to supplement the 4-H Club Day Guidelines (11 - 14). If you have any questions or still cannot find helpful information, Master Volunteer Suzanne Hokett is available to schedule time with families or clubs to help, either in-person, phone, or via Zoom. Suzanne can be reached at 785-643-6511.

## Changes to Your Email & Mailing Addresses

If you go to 4HOnline and change your mailing address or email address, please be sure to let the Extension Office know. We do not receive any notification that changes have occurred. To help make sure you will receive the 4-H Newsletter and other important information via the mail and email, please let us know.



# ***Livestock Information***

## **Attention Livestock Exhibitors – 2024 YQCA Certification**

Youth for the Quality Care of Animals (YQCA) is a national, multi-species youth livestock quality assurance program that focuses on food safety, animal well-being, and character development, through an age-appropriate educational curriculum for youth 8-21 years of age. This program is an annual certification that grows with a young person, so the learning modules are different every year. ALL livestock exhibitors (beef, swine, sheep, meat goat) are once again required to be YQCA-certified in order to participate in the 2024 Ottawa County Fair, Tri-Rivers Fair, Kansas State Fair Grand Drive, and/or Kansas Junior Livestock Show (KJLS). This includes youth who will be showing market animals, commercial breeding females and/or registered purebred breeding females.

If you are a 7-year-old and do not plan to show at KJLS, you are not required to have your YQCA certification, but you are more than welcome to attend just for the learning experience (no registration needed). If you are a **7-year-old who will show at KJLS, you must be YQCA certified** by attending an instructor-led course.

Certification dates for 2024 are set for March 5 (Salina, K-State College Center Conference Room), March 14 (Minneapolis Courthouse Meeting Room), and April 17 (Minneapolis Courthouse Meeting Room) and will begin at 6:30 p.m. Parents do not need to attend. They may drop off and pick up children accordingly. Also, know that if you do not wish to attend in-person training, the online course is available.

**Follow the link <https://yqcaprogram.org/> to login into your 4H Online account and sign up for a class.** Help videos including information on registering, logging in, how to sign up for courses, and more can be located at <https://www.youtube.com/@yqca2199>. Please remember to have members complete the **PRE-TEST** before coming to the course and the **POST TEST** after attending the course. They will not be able to receive their certificate until both are completed. For more details about the YQCA program, contact Justine Henderson ([jwh04@ksu.edu](mailto:jwh04@ksu.edu) or 785-392-2147).

## **Beef Weigh-In & Tagging for District Beef Project Members**

Beef Weigh-in will be Saturday, March 9, in two locations. From 8:00 a.m. -11:30 a.m. we will be at Glenn Engelland's Farm and from 1:00 p.m. - 3:00 p.m. at Spencer Schrader's Farm. Regardless of where you plan to go, please go to <http://www.centrankansas.ksu.edu/4-h> and click on the Beef Weigh-in sign up for a spot before Thursday, March 7. Sign-up will be ONLINE ONLY. Both locations are open to all District 4-H Members. All animals will have an official "Kansas 4-H" ear tag put in the ear at a cost of \$3.50/tag.

➔ **NEW FOR 2024** - We will be weighing, tagging **all market animals, and tagging all commercial heifers.** Photo submissions are no longer accepted as a way to tag commercial heifers. Registered heifers and bucket calves DO NOT need to come to weigh-in and tagging.

## **Small Animal Weigh-In & Tagging - Market & Breeding Meat Goat, Sheep & Swine**

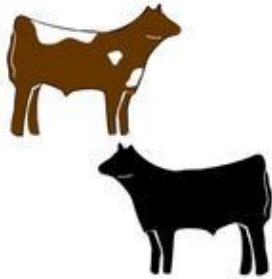
The Districtwide small animal tagging and weigh-in will be held April 24, in Salina (fairgrounds) and April 25, in Minneapolis (fairgrounds) from 4:00 p.m. – 6:00 p.m. for meat goats, sheep, and swine. Tags will cost \$3.00/tag.

➔ **NEW FOR 2024** - Swine projects are now required to be at the small animal weigh-in and tagging. **Photo submissions are no longer accepted as a way to tag pigs.**

You will need to bring all market and breeding swine projects to tagging. They will not be weighed and will be left on trailers for tagging. Members or an associated adult will be required to tag all swine.



# CENTRAL KANSAS BEEF CLASSIC SHOW



This “Blow and Go” show will be held on Saturday, April 13. The show is open to any bonafide 4-H and FFA member who has not yet reached their 19<sup>th</sup> birthday before January 1, 2024. There will be a special class for the 4-H members enrolled in a club in the Central Kansas District. The entry fee is \$25 per head, but after April 5 the fee will increase to \$30 per head. All fees must accompany registration. For registration information, please go to the District website (<http://www.centrankansas.ksu.edu>), click on 4-H Youth and Development on the left-hand side, and a flyer will be located under Upcoming Events and Online Registration.

## K-State Junior Beef Producer Day

The K-State Junior Beef Producer Day is scheduled for Saturday, March 2, in Weber Arena in Manhattan, KS. This event is a one-day, family educational event that focuses on youth beef projects. Youth, parents, agents, ag teachers, and project leaders of all ages and skill levels are invited to attend. Tentative topics include selection, nutrition, meat science, reproduction, health, grooming, and showmanship. An optional YQCA certification session will be offered at the end of the day. The deadline to register is February 12. The cost is \$20/person by the deadline, or \$25 after. Only those registered by February 12 will receive a t-shirt. All attendees, including both youth and adults, must register.

If you prefer to submit your registration by mail and pay with a check or cash, please email Lexie Hayes at [adhayes@ksu.edu](mailto:adhayes@ksu.edu) for a registration form.

Registration is open now for both  
K-State Junior Beef Producer Day and  
K-State Junior Sheep Producer Day and  
may be completed using this link: <http://bit.ly/ksuasiregister>  
or clicking on the QR Code.



## K-State Junior Sheep Producer Day

The K-State Junior Meat Goat Producer Day is scheduled for Saturday, March 16, in Weber Hall in Manhattan, KS. This event is a one-day, family educational event that focuses on youth meat goat projects. Youth, parents, agents, ag teachers, and project leaders of all ages and skill levels are invited to attend. Tentative topics include selection, nutrition and feeding, facilities, health, reproduction, meat science, wool, clipping and grooming, and showmanship. An optional YQCA certification session will be offered at the end of the day. The deadline to register is February 26. The cost is \$20/person by the deadline, or \$25 after. Only those registered by February 22 will receive a t-shirt. All attendees, including both youth and adults, must register.

If you prefer to submit your registration by mail and pay with a check or cash, please email Lexie Hayes at [adhayes@ksu.edu](mailto:adhayes@ksu.edu) for a registration form.



# 4-H Scholarships

Attention High School Seniors!! Are you in search of some funds to further your college education? Here are several 4-H scholarships you may be eligible for:

## Local 4-H Scholarship Information

Local CKD 4-H Scholarship & Tri-Rivers Fair Scholarship information is now posted on the CKD 4-H Scholarship website - <https://www.centrankansas.k-state.edu/4-h/scholarships/index.html>

**All scholarships will be due ONLINE no later than March 1, 2024.**

If you need a letter of recommendation from Jacob ([jlschmeid@ksu.edu](mailto:jlschmeid@ksu.edu)) or Kate ([klittich@ksu.edu](mailto:klittich@ksu.edu)), please send an email requesting a letter. Be sure to include your most current resume and 4-H permanent record with the email. If possible, they ask for 2-3 weeks to complete the letter of recommendation prior to the due date.

## Kansas 4-H State Scholarship Information

For more information on the Kansas 4-H Scholarships, please go to <https://www.kansas4-h.org/resources/awards-and-recognition/scholarships.html>

**All scholarships will be due ONLINE no later than March 1, 2024.**



## County Fair Information

It is hard to imagine that the county fairs will be here before we know it. The planning has begun. Watch for more details in future 4-H newsletters and emails to 4-H families.

## Fair Superintendents and Assistant Superintendents

The dates for the Ottawa County Fair are July 16-19. The Tri-Rivers Fair will be on August 7-10 (pre-fair days on August 5 & 6). Both fairs need superintendents and assistants. We need a lot of parents and youth to help ensure a smooth-sailing event. Do not forget that these leadership and citizenship opportunities can be counted in the 4-H member's record book. Interested 4-H members, parents and volunteers should sign up online by April 1 by going to <http://www.centrankansas.ksu.edu/4-h>, and you will find a link under "Upcoming Events and Online Registration" for County Fair Superintendent and Assistant Superintendent Sign-up. **Note: Sign-up is not open at this time but will be open soon.**

## Fair Papers

The fair papers for the county fairs will be posted online as soon as they become available. Watch the newsletter and/or email for when they are posted.

# Leadership Opportunities

## Volunteer Orientation

The next Volunteer Orientation is scheduled for Thursday, February 15, from 6:30 – 8:30 p.m. Online “RSVP” is required by February 8. There is also an orientation scheduled for Sunday, March 24, from 1:00 – 3:00 p.m. An online “RSVP” is required by March 17. Both orientations will be determined by the RSVPs. The links can be found on the website at <http://www.centrankansas.k-state.edu/4-h> under Upcoming Events and Online Registration. If you do not have access to the web, please contact either Extension Office. If there are not enough individuals interested, it will be cancelled, and those who sign up will be notified.

Youth in the 4-H program often engage in leadership and volunteer experiences as part of their 4-H program participation. Youth are welcome to attend volunteer orientation as a leadership workshop.

## Districtwide Leadership Workshops

Come learn some fun activities you can use at club meetings for ice-breakers, team building, and discussion. The workshop will be held on Thursday, March 7, from 7:00 - 8:30 p.m. in the College Center Conference Room. **Please register by Thursday, February 29.** Another districtwide leadership workshop will be held on Tuesday, April 16, from 7:00 - 8:30 p.m. in the Minneapolis Courthouse Meeting Room. **Please register by Tuesday, April 9.** Register by going to <http://www.centrankansas.ksu.edu/4-h/> and click on the link under “Upcoming Events & Online Registration.”

Remember...This workshop will count for the leadership workshop on the pin application. ***Who can attend?*** 4-H Members, Parents, and Volunteers can attend! Participants will learn activities they can take back to their clubs and other groups they work with or are a part of. Key lessons that will be emphasized are: teamwork, cooperation, leadership, problem-solving, communication, and decision making.

## Youth As Resources

Ever needed an extra hand putting together a 4-H meeting? Ever said, “If only, someone could do this job without supervision?” Have you spent endless hours searching for the “right” adult volunteer? Maybe the best adult volunteer is a TEEN or even a younger 4-H member. Why? Teens and younger kids are not distracted by other priorities, and they like to be needed. Also, they are usually technology gurus. The next time you are looking for the perfect volunteer who needs no supervision . . . look for a 4-H member! You will be pleasantly surprised.

## Discovery Days

Are You Ready for Discovery Days? Put June 5-7, 2024, on your calendar to be in Manhattan on the K-State campus. Discovery Days is open to all youth who are 13 to 18 years old by January 1, 2024. 4-H membership prior to Discovery Days is not required.



## SAVE THE DATE – 48 HOURS OF 4-H

Join us this fall in seeing just how much we can give back to our communities! The weekend (October 12-13) after National 4-H Week, is the perfect opportunity to set up a service project for the Kansas 4-H Service Challenge, 48 Hours of 4-H. Invite your friends, clubs, adult volunteers and 4-H Alums too! If these dates create a conflict for your club, don't worry! Plan a project for another weekend in October!

# 4-H Camp Update

A quick update regarding 4-H Camp...

- 4-H Camp is for ALL AGES!
- 4-H Camp Details on cost, dates, and age categories can be found at <https://www.rockspringsranch4hcamp.org/sessions-rates/>
- 4-H Camp 2024 will be using the "Open Enrollment" method. 4-H Open Enrollment means families can register for any 2024 4-H Camp Session that fits their schedules. For additional information, to <https://www.rockspringsranch4hcamp.org/>
- Our older 4-H members who would typically be interested in serving as a camp counselor are encouraged to participate in the LIT and/or CIT camp sessions at Rock Springs.
- **Registration is handled on a first-come, first-serve basis.**
- The Central Kansas District 4-H Council budgeted a \$60 per night scholarship for 4-H members to attend 4-H camp. In order to receive this scholarship, an approved scholarship application must be received no later than **Monday, April 1, by 5:00 p.m.** at either of Extension Office.
- The Saline County 4-H Development Fund provides scholarships to Central Kansas District 4-H members for 4-H Camp, as well. However, the amount of their scholarship has not yet been determined. If a 4-H member submits the 4-H Council Scholarship Application and it is approved, the member will also receive this scholarship automatically.
- Once the scholarship form has been received and approved, one check will be written to Rock Springs to cover the scholarships for all of our 4-H members.
- If any family has already paid their registration in full, please contact Kate.



## Wanted Host Families for 2024

Looking for fun and excitement this summer? Host a new friend from Japan in your home this summer, July 23 – August 15. Kansas 4-H International Exchange Programs are offering hosting opportunities for 35-40 families this summer. Host families are needed who would be willing to host a Japanese boy or girl. The Japanese youth will be between the ages of 12 - 16. Our responsibility is to make host family assignments matching each delegate with an American same-gender host sibling as soon as possible so that families and exchange delegates can communicate and get to know each other.

Any Kansas family with children aged 10-17, who is interested in the Japanese culture, may host. A separate bed is required, but not necessarily a separate room from the host sibling. Delegates are 100 percent medically covered with 4-H insurance and bring their own spending money. They can go on host family vacations, camping trips, or join their host sibling for summer camps and the county fair. The focus is everyday family life.

Interested families can complete the application at <https://www.states4hexchange.org/apply/host/> to start the process. The Japanese Delegates personal information forms arrive in February.

If you have further questions, please call Pam Van Horn, Kansas 4-H Japanese Exchange Coordinator, 785-826-8917, or e-mail [pvanhorn@ksu.edu](mailto:pvanhorn@ksu.edu).



# ***Districtwide Project News***

## **Districtwide Cloverbuds at a Glance**

Date: Third Thursday of the month

(February 15, March 21, April 18, May 16, June 20, July 18)

Time: 6:30 - 7:30 p.m.

Location: Salina Heights Christian Church (NE corner of Cloud and Roach - Use the east parking lot and door.)

RSVP: Email Allison at [allisonlecklider@yahoo.com](mailto:allisonlecklider@yahoo.com)

\*Must be received at least two days before the meeting (Tuesday) so there are adequate supplies.



## **District 4-H Horse News**

### Horse IDs

A link to the Horse ID Form can be found at <https://www.centrankansas.k-state.edu/4-h/> under 4-H Member Forms and Documents, "Horse ID." Be sure and check the back page, lower right-hand corner for the date to ensure you have the correct form. For new horses, the date should be **January, 2023**. If you are showing the same horse that was ID'd previously, a prior date is okay.

Items to note:

- The form **MUST BE** front and back of one page, not 2 pages.
- A standard size picture **MUST BE** attached. The picture should include all 4 legs and feet showing a profile of the horse with the head turned toward the camera. **ALL** markings must be clearly visible.
- Members, Parent/Guardian, Owners (if horse is leased) and County Agents **MUST** sign and date.
- The **ORIGINAL** 4-H Horse Identification Certificate **MUST** accompany the 4-H member. The county office and project leader may have a photocopy.
- This form can be signed anytime between now and May 31, 2024.

If you have any questions, please don't hesitate to contact the Extension Office.

## **Kansas 4-H Shooting Sports Age**

The Kansas 4-H Shooting Sports program adheres to the National Shooting Sports Policies. The national policy regarding youth participation is stated as follows:

"4-H Shooting Sports Programs are open to all youth 8 years of age or older (as of Jan. 1 of the current year) without regard to race, color, sex, handicap, religion, age or national origin. Each state Land Grant University determines 4-H maximum age eligibility. Note that age eligibility for National 4-H Shooting Sports Events is determined by the National 4-H Shooting Sports Committee and may be different than that of other states. 4-H Cloverbuds (age 5-6) and members age 7 are not eligible for any aspect of 4-H shooting sports programs, as these are not age-appropriate activities."



- Junior apprentices and apprentices must be in the presence and under the supervision of a Level 1 instructor to provide live fire, hands-on safety instruction.
  - Junior apprentice - 4-H age 14 to 17 by training certification date.
  - Apprentice instructor - Age 18 to 20 by training certification date.
  - Must participate and successfully complete an approved 4-H shooting sports training. Trainings from other states may be accepted on a case-by-case basis.

Inappropriate activities include attending shooting sports meetings and practices. 4HOnline does not allow youth under age 8 to enroll in 4-H Shooting Sports.



# Information On Fundraisers

## Attention 4-H Families, Districtwide Project Leaders, & Organizational Leaders



### Central Kansas District Fundraising Policy

The Central Kansas Extension Board adopted a policy to go alongside the Kansas 4-H Policy regarding fundraising at the February, 2014, Board Meeting. The policy is:

“4-H members MAY NOT solicit funds to help fund their individual 4-H projects. 4-H members may fundraise for a specific 4-H EDUCATIONAL trip. Donations given directly to a 4-H member ARE NOT tax deductible because they do not go to a 4-H club or group. Any fundraising programs by clubs or individuals MUST be approved by the 4-H Youth Development Agent; the funds must be used to further the 4-H mission; the account procedures must be appropriate and in accordance with the POLICY; and the 4-H name and emblem must be properly used.”

***Any fundraising done in the name of 4-H needs to be approved by Jacob.***

### Annual Ottawa County 4-H Foundation Fund Drive

The annual Ottawa County 4-H Foundation Fund Drive will be held March 1 - 31 this year.

### Tri-Rivers Fairboard Fundraiser

The Tri-Rivers Fairboard would like to invite you to join the Dillon's Community Rewards Program which donates a percentage of your total Dillons bill to the Saline County Fair Association (Fairboard) which we use to support 4-H. You may sign up at: <http://www.dillons.com/communityrewards>



## Third in a Series of Questions

### About the Saline County 4-H Development Fund

Can I donate to the Saline County 4-H Development Fund? Can I designate the Saline County 4-H Development Fund as a memorial for a loved one? These are questions you might have heard at a 4-H meeting, and we would like you to know the answers.



Anyone can donate to the Development Fund at any time. As a not-for-profit foundation, your donation will be tax deductible. Checks can be mailed or delivered to the CKD Extension Office. Donations made during Match Madness, March 21, 2024, will be “matched” (up to 50%) by the Greater Salina Community Foundation, so that is a good way to make your generous donation have an even greater impact on 4-H!

Upon the passing of a loved one, especially if they had a life-long passion for 4-H, naming the Saline County 4-H Development Fund as the suggested memorial is a great way to honor their passing. During the estate planning process, we encourage people to consider including the Saline County 4-H Development Fund in their will or trust, or it can be named a beneficiary of a savings or investment account. This is a great way to continue supporting 4-H into the future.



# EXTRA

## NEWS FOR CENTRAL KANSAS DISTRICT ORGANIZATIONAL LEADERS

### February Check-Up

Five months into the 2023-24 4-H year...where has the time gone? Are you ready for the monthly check-up? There are many spring activities in front of us that are about to spring into action. Where is the club heading? How are members doing on projects? What great and wonderful opportunities are the project leaders teaching? Let's take a look . . .

#### Review

- \_\_\_\_\_ *4-H Club Day Run-Offs explained to the 4-H members.* Run-Offs conducted Saturday, February 17.
- \_\_\_\_\_ *4-H Newsletter* read and important dates marked on calendar.
- \_\_\_\_\_ Review highlights from the *4-H Newsletter* at club meeting.

#### To-Do

- \_\_\_\_\_ Volunteer Service Application and Renewal Form completed on all project leaders in 4HOnline.
- \_\_\_\_\_ Project Leaders conducting project meetings.
- \_\_\_\_\_ 4-H Club members inviting friends to join 4-H. Parents encouraging other parents to explore 4-H.
- \_\_\_\_\_ Check club mailbox at the Extension Office.
- \_\_\_\_\_ Report from the January 4-H council meeting.
- \_\_\_\_\_ Encourage 4-H members to update their Achievement Pins and Permanent Records.
- \_\_\_\_\_ Check club's progress toward goals and club annual summary up-to-date.
- \_\_\_\_\_ Visitors reported to Kate (klittich@ksu.edu).

#### Promote/Recruit

- \_\_\_\_\_ 4-H Camp promoted.
- \_\_\_\_\_ 4-H Discovery Days promoted, June 5-7.

#### Remember

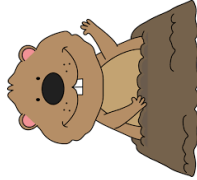
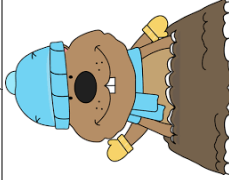


- \_\_\_\_\_ Reminder . . . if needing to cancel from 4-H Club Day, please call the Salina Extension Office by NOON, Thursday, February 15.
- \_\_\_\_\_ 4-H Club Day at Salina South Middle School, 2015 Simmons (parking and entrance off of 4<sup>th</sup> Street), February 17.
- \_\_\_\_\_ 4-H Club Day contestants reminded that **NO PIANO OR KEYBOARD** is available for practice.



### ORGANIZATIONAL LEADER UPDATE

The next Organizational Leader Update will be held at 7 p.m., Thursday, March 28, via zoom. We will be discussing county fairs and more! You won't want to miss this update!

# February, 2024

Sunday	Monday	Tuesday	Wednesday	Thursday	Friday	Saturday
				<b>1</b>	<b>2</b>	<b>3</b> Quiz Bowl, K-State Campus, Technology Center, Salina, 8:00 a.m.
<b>4</b>	<b>5</b>	<b>6</b>	<b>7</b>	<b>8</b> Volunteer Screening Orientation , RSVP Due	<b>9</b>	<b>10</b>
<b>11</b>	<b>12</b>	<b>13</b>	<b>14</b> Red Wheel sales DUE to Minneapolis area club leaders 	<b>15</b> Volunteer Screening Orientation, Location TBD 6:30 - 8:30 p.m. 4-H Club Day cancellations DUE by noon Cloverbud Meeting, Salina Heights Christian Church 6:30 p.m.	<b>16</b> 4-H Club Day digital submissions DUE by noon	<b>17</b> 4-H Club Day, Salina South Middle School
<b>18</b>	<b>19</b> President's Day Minneapolis Office Closed	<b>20</b>	<b>21</b>	<b>22</b>	<b>23</b>	<b>24</b>
CIA—Topeka 						
<b>25</b>	<b>26</b>	<b>27</b>	<b>28</b>	<b>UPCOMING DATES:</b> <b>March</b> <b>1</b> - ALL District and State Scholarships DUE Online <b>2</b> - Red Wheel delivery, 9:00 a.m., Minneapolis <b>7</b> - Leadership Workshop, 7:00-8:30 p.m., Salina <b>9</b> - Spring Beef Weigh-In <b>23</b> - Regional 4-H Club Day, Clay Center <b>29</b> - Leadership Workshop, Registration Due		



**Central Kansas Extension District**

**Salina Office**

Kansas State University Salina  
Aerospace and Technology Campus  
2218 Scanlan Ave  
Salina, KS 67401-8196

Address Service Requested

## THE 4-H YEAR IN FULL SWING

Dear 4-H Families,

Welcome to a new year! 2024 has already been full of opportunities to see 4-H families and their bright smiles, with many more to come. As we keep enjoying chances to spend time with friends, work towards our goals, and complete our project work, remember to have fun! This time of the year can be riddled with activities, as you all know, but don't forget to reach out to us here at the Extension Office if there is any way we can help!

With that in mind, our Newsletters and email messages through 4-H Online will be the best way to find out about upcoming events in Central Kansas District 4-H. Keep an eye out for these, as staying on top of these registrations, events, and opportunities is the best way to enjoy a stress-free spring and summer. Best wishes to you all, while we look forward to warmer weather!

-Jacob

---

**Minneapolis Office** • 307 N Concord • Suite 190 • Minneapolis, KS 67467-2140 • 785-392-2147 • Fax 785-392-3605

**Salina Office** • K-State Salina • 2218 Scanlan Ave • Salina, KS 67401-8196 • 785-309-5850 • Fax 785-309-5851